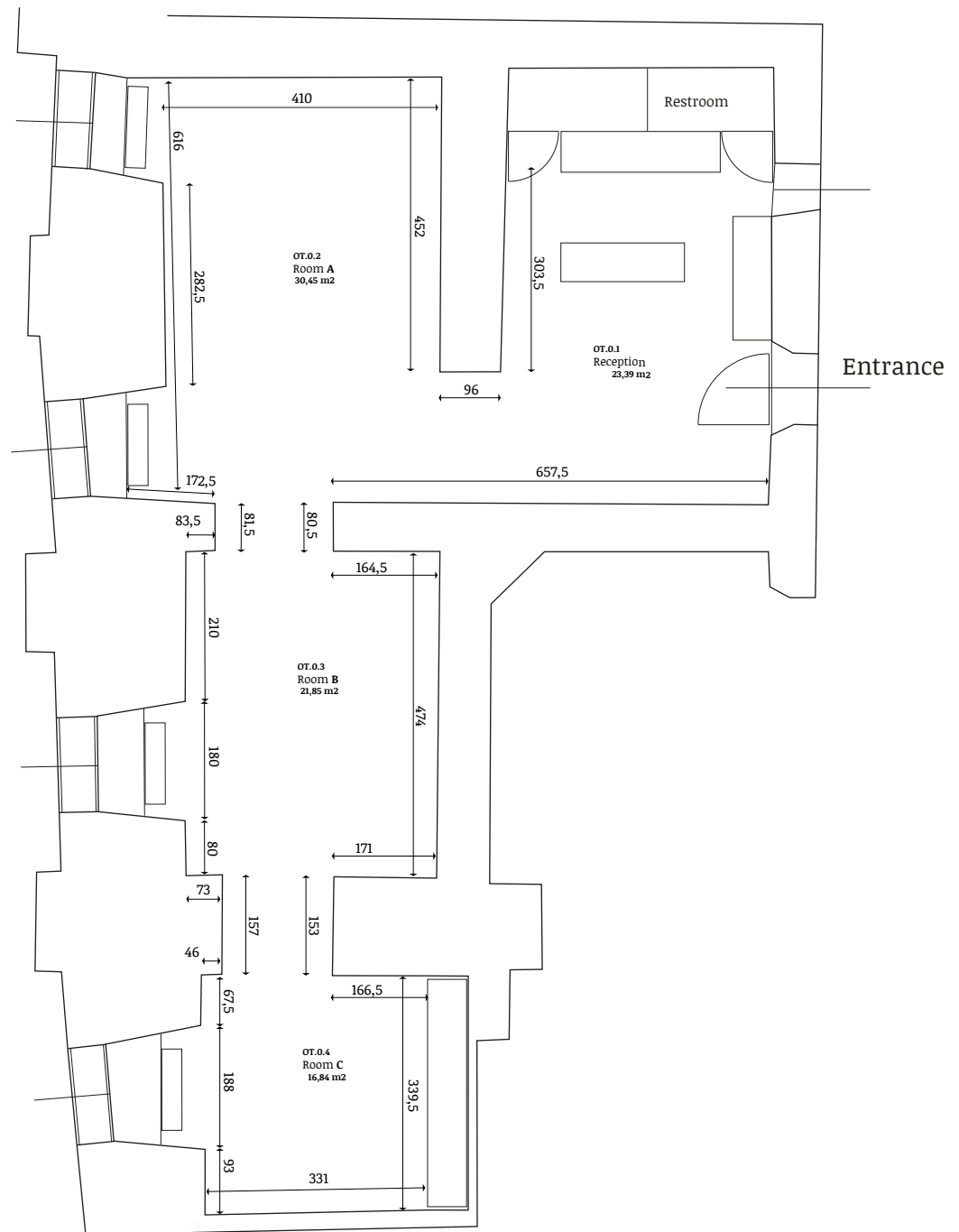


• k nstler:innen
vereinigung tirol

• neue
galerie



Floor plan NEUE GALERIE

Hanging space:

suspended wall panel made of drywall with a wooden substructure: full height of 220 cm, 10 cm above the floor

Footprint:

Room A: 30,45 m²
Room B: 21,85 m²
Room C: 16,84 m²

Ceiling heights:

Vault: 3,40 m
Light rail reception: 2,29 m
Light rail rooms A,B,C: 2,68 m

Passages:

Reception - room A: 159 cm
Room A - B: 120 cm
Room B - C: 120 cm

Entrance door: H = 208 cm / W = 119 cm